

RUSTOMJEE
VERDANT VISTAS
UPTOWN URBANIA | THANE (W)

IT'S THOUGHTFUL. IT'S **Rustomjee®**



IT'S THOUGHTFUL. IT'S **Rustomjee®**

LIMITLESS VERDANT VIEWS.



TIMELESS GRANDEUR.



A NEW ERA OF FINE LIVING
ARRIVES IN THANE.





BOMAN R. IRANI
CHAIRMAN &
MANAGING DIRECTOR

“Over the last 28 years we have mastered the art of elevating fine living in Mumbai, our projects becoming landmarks in not just redefining community living, but also evolving the definition of luxury, in some of the most coveted locations across the city.

Our journey in Thane began more than a decade ago, with Rustomjee Urbania, our flagship project in the city. A vibrant flourishing community where we built more parks than parking lots and created spaces where neighbours became friends. We didn't just create brick and mortar structures, but an entire eco system to ensure this township was self-sufficient and had the best of community, culture and connectivity.

Rustomjee Cambridge International School, state of the art commercial and retail spaces for your work and daily needs, and a network of well-planned infrastructure are all a testament of our commitment.

Today we are delighted to bring the next level of splendour to Thane with our newest development Rustomjee Verdant Vistas. Surrounded by greenery and blessed with unending blues. This luxurious blissful paradise, I'm sure you will soon call home.

At Rustomjee, we understand luxury and with Verdant Vistas, we want it to be your way of life. Here, luxury has been built in the details, the quality, and each element from the marble to the timber, from the fittings to the finishes has been handpicked by us, from the best brands and authentic sources from around the world. Take for instance, the marble you will walk upon comes with a legacy of its own. Mined from the quarries in Isparta in West Turkey, this Ottoman beige marble has adorned some of the finest Turkish heritage structures. It is amongst the oldest and strongest marbles, giving you not just a fine finish now, but also durability for years to come. With this landmark project, we continue our pledge of creating spaces where luxury coexists with sustainability, to bring an unparalleled experience of 'Thoughtful Luxury' to you. Our engineers, environmentalists, designers, architects, manufacturers, thought leaders - all planet lovers have come up with innovative new age materials and technology to create a sustainable habitat.

We are creating your perfect world for relaxation, indulgence and daily adventures in collaboration with award winning global partners, Keppel, Architect Hafeez Contractor and COEN. Come experience the finest that Thane has to offer, find your community, and build a great life for you and your family at Verdant Vistas. ”

ANOTHER GLORIOUS CHAPTER IN OUR PARTNERSHIP WITH KEPPEL.



“We are thrilled to partner with Rustomjee to create another transformative chapter in the neighbourhood's lifestyle story, Verdant Vistas- a collection of four distinctively designed, high-end residential towers. This will be a first for Thane.

Leveraging Rustomjee's unmatched expertise in the local arena spanning over two decades and our track record of delivering award-winning international projects, we aspire to craft niche residences that epitomize exclusivity and set new standards of living in Thane. ”

Singapore-based multi-national firm Keppel is bringing its award-winning expertise in creating urban landscapes to Thane once more. This time with an additional touch of luxury to create Thane's finest luxury residential spaces at Verdant Vistas. Combining our depth of local insights and human centric intelligence with their own cutting edge architectural concepts that have community life at their very heart, here is a development that will push the metre of excellence and take lifestyles in Thane a notch above.



SPRAWLING SUNDECKS THAT OVERLOOK THE CITY'S MOST DRAMATIC SPECTACLE: VERDANT VIEWS.

Welcome to Verdant Vistas, the newest addition to the Rustomjee Uptown Urbania township. This cluster of four residential towers, soaring to 46 storeys, is a introduction to elegance and refinement like Thane has not witnessed before.



Ultra spacious residences



Large common spaces
within each home



Niche amenities spread
across various levels



WHEN DESIGN MEETS THOUGHTFULNESS, IT SHOWS IN EVERY SQ. FT.

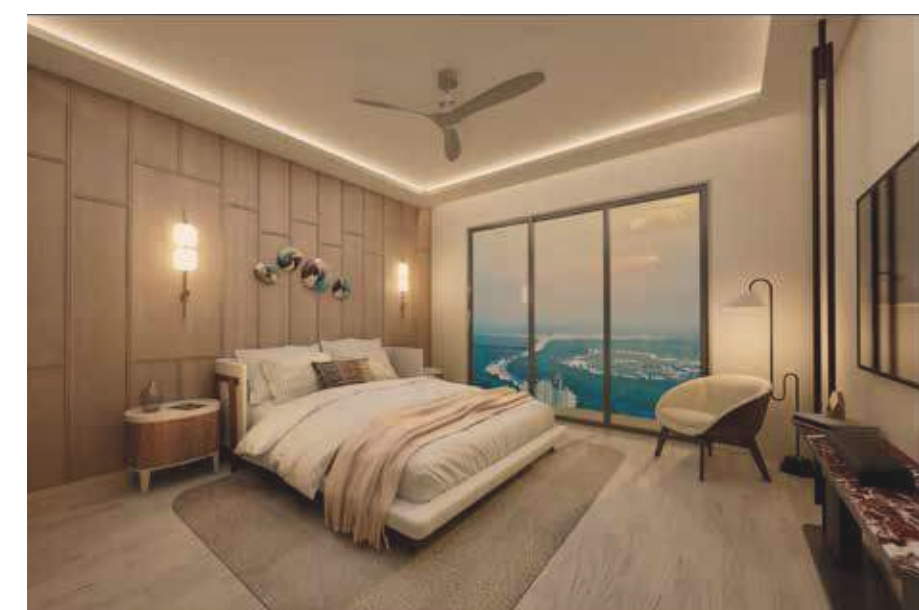
We believe that exceptional design is the cornerstone of a life elevated. At Verdant Vistas, we have gone beyond the ordinary to create a work of art. The cluster of towers is open from all sides to let in fresh breezes, natural light and offer unobstructed views of the creek and internal podium from all sides.



Dedicated towers for 3 & 4
bedroom homes



Efficient planning with large open
spaces across the property



THE SIGNATURE
OF A TRUE
MASTERPIECE:
EXPANSIVE SPACE.

Soaring ceiling heights to touches like walk-in wardrobes, from larger living areas to the connection with the views and greenery surrounding you, these are homes you may never want to step out of.



Floor to ceiling
height of 10' 3"



Walk-in Wardrobe in 4
and Select 3 Bed apartments



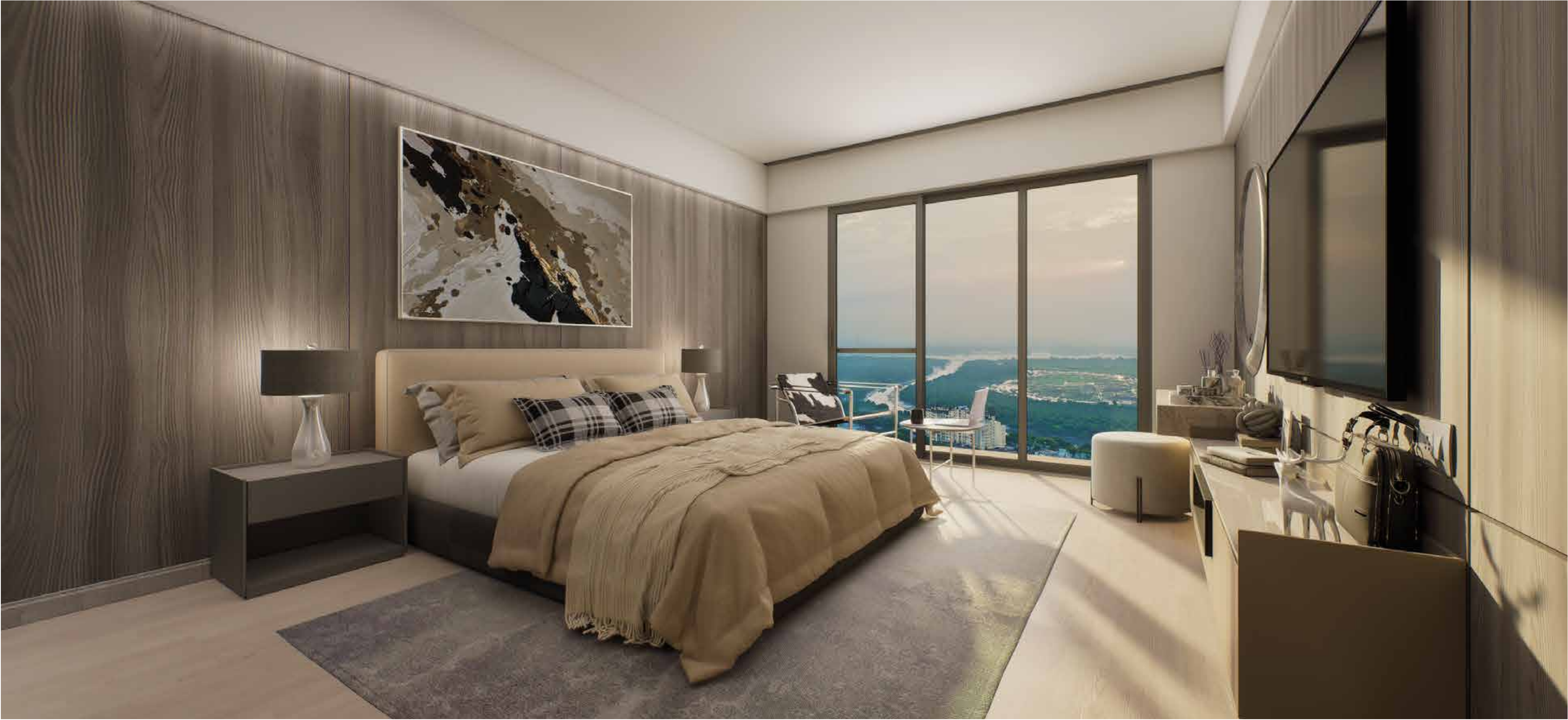
Expansive 3 bedroom homes
with wide decks



Efficiently planned
with large room sizes



Lavish 4 bedroom homes
with 150 sq. ft. large sun decks



WORLDS OF
REFINEMENT CREATED
WITH ONE IDEA:
THOUGHTFULNESS.



A WORLD-CLASS
SELECTION OF LIFESTYLE
AMENITIES SPREAD ACROSS
THREE LEVELS THAT MAKE
EVERYDAY EXTRAORDINARY.



Clubhouse with landscape gardens
and play areas at the ground level



Social spaces across the
recreational floor



A choice of lifestyle amenities
at the rooftop





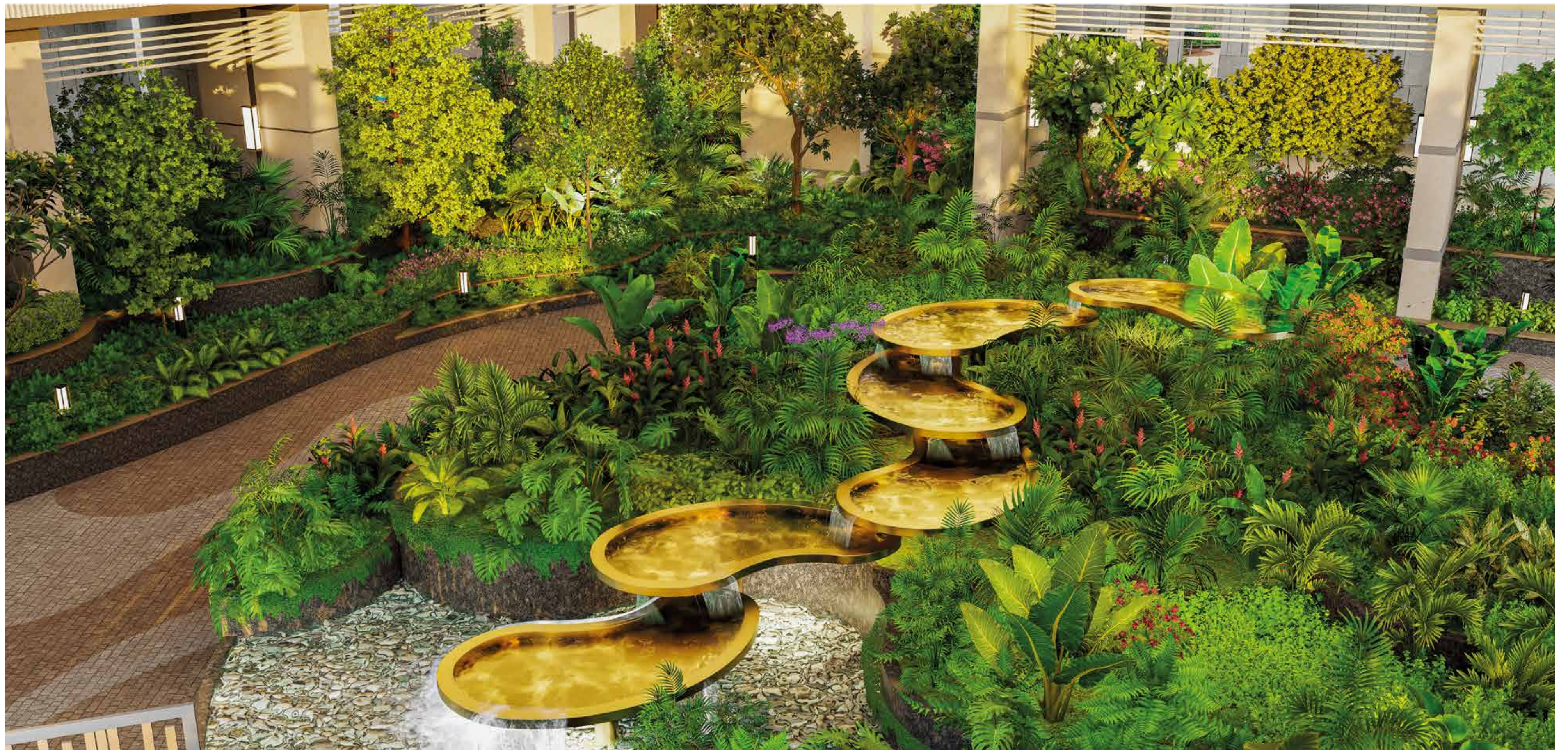
FOR YOU, NO DETAIL
IS TOO SMALL
AND NO INDULGENCE
IS TOO BIG.

Attention to detail is part of the floor plan of every landmark we build. We challenge the conventional notions of architecture and design, crafting architectural marvels that set the precedent for future designs.

From the selection of only the finest materials, innovative construction methods and excellence in engineering to premium finishes, every aspect of our homes is painstakingly curated.

LANDSCAPING
THAT BLURS THE LINES
BETWEEN HUMAN
DESIGN AND
NATURAL WONDER.

*Imagine a hidden sanctuary nestled in the heart of Bali, where
nature's artistry surrounds you. Vivid hues of greens and blues
conjure an atmosphere of calm, making you forget you're in the city.*



AN EXCLUSIVE CLUB
THAT INCLUDES
EVERYTHING YOU DESIRE.
AND GUESS WHAT?
YOUR NAME'S ALWAYS
AT THE TOP OF THE LIST.



IT'S HARD TO CHOOSE
HOW TO UNWIND,
WHEN THERE ARE ENDLESS
OPTIONS AVAILABLE
JUST STEPS
AWAY FROM HOME.

- SOCIAL DECK

GRAND ENTRANCE

ENCHANTED TRAIL

SALON

PETS' CORNER
- FESTIVAL MEADOW

HANGING GARDENS

FLOATING RAMP

CELESTIAL GARDEN PAVILION

HEALTH CAFE





A TREAT FOR YOUR SENSES,
AND A DELIGHT FOR
YOUR SOUL. THE DEFINITION
OF LEISURE, REIMAGINED.

*In our pursuit of crafting exceptional homes, we go beyond
conventional ideas. Step into the grandeur of
the lobby, where the three-level Clubhouse awaits.*

- THREE-LEVEL CLUBHOUSE
WITH SUNKEN POOL
- 30 M LAP POOL
- KIDS' POOL
- BANQUET HALL WITH
OPEN TERRACE
- BUSINESS LOUNGE
- SQUASH COURT





WIN AT FRIENDSHIP
AS MUCH AS
YOU DO AT SPORTS.

PICKLEBALL
GOLF PUTTING GREENS
FOOSBALL CHAMBER
TABLE TENNIS

AIR HOCKEY
GAMING DECK
POOL TABLE

MORE WAYS
TO MAKE KIDS
BELIEVE LIFE IS
ONE BIG
PLAYGROUND.

At Verdant Vistas, discover spaces designed to foster every aspect of your child's development. From interactive playgrounds sparking their imagination to zen gardens fostering a love for nature, each corner sets the stage for a holistic childhood.



LITTLE ONES' PLAYZONE
KIDS' NATURE PLAYZONE



THERE ARE INFINITE
OPTIONS TO
UNWIND AROUND
EVERY CORNER.



STARGAZING DECK
STELLAR SKY BAR
YOGA STUDIO
GYMNASIUM
JACUZZI PODS
MASSAGE & SAUNA ROOMS



ADD A VERY
IMPORTANT
APPOINTMENT
TO BUSY
WORK DAYS:
AN HOUR IN THE
MASSAGE ROOM.



WHEN IT COMES
TO ELEVATING
YOUR LIFESTYLE,
THE SKY'S THE LIMIT.





AN ADDRESS THAT PROMISES MAGNIFICENCE IN EVERY SINGLE DETAIL.

At Rustomjee Verdant Vistas, you will find luxury is in the details. Every nuance bears testimony to fine craftsmanship that sets a precedent for the future of fine living.

JUST SOME OF THE ELEMENTS THAT ELEVATE LIFE:



External paints that promise dust resistance, weather and UV ray resistance, and lower energy consumption because of their heat repellent property



Future ready homes with thoughtful fittings such as folding shower seats and grab rails for senior citizens



Wheelchair and walker accessible washroom



Patented dusk to dawn motion sensor lighting technology



Use of natural elements and premium materials

OUR PLANS ARE DESIGNED TO CARE
FOR OUR FIRST HOME: THE PLANET.



Energy management with 100% LED lighting for interiors and exteriors, as per national and global standards



Optimized building envelope to reduce heat and increase energy efficiency



Efficient storm water management



Rain water harvesting, including collection of condensation from air-conditioners



Grey and black sewage treatment plants to conserve water



Dry, wet and hazardous waste segregation



Organic composting and wet waste treatment for horticultural purposes



Automated irrigation system for efficient coverage of all landscaped areas



Monocrystalline solar panels for greater efficiency and enhanced energy output



Solar water heating system for the top 5 floors



Variable Refrigerant Volume (VRV) air-conditioning that works with minimum noise to optimize space-saving, energy and operational costs



EV charging stations at convenient points across the township



CREATING
MASTERPIECES CALLS
FOR WORKING WITH
MASTERS FROM
AROUND THE WORLD.



OUR PARTNERS:

Coen Design International Pte. Ltd.

A Singapore based landscaping company that has over 15 years of experience and countless award winning landscape projects under its belt. It even holds a Guinness World Record for the Largest Vertical Garden in the World. Coen has partnered with Rustomjee on more than one of our signature addresses. Their unique design language connects indoor and outdoor spaces seamlessly. They specialise in bringing out the essence of each location they work on.



Architect Hafeez Contractor

Architect Hafeez Contractor (AHC) is India's leading architectural design consultancy firm, and the man himself needs no introduction. The firm prides itself on unique design concepts and bold executions. With over 30 years of experience and 75 international and national awards, it's safe to say that Hafeez Contractor has transformed the city's skyline with his idiosyncratic style.

Ministry of Design

Ministry of Design (MOD), Singapore, is an integrated architectural, interior design and branding firm that has won multiple awards not only in Singapore but also in the US. It questions convention and redefines spaces, forms and experiences that surround us, so that its creations progress seamlessly between form, site, object and space. MOD goes beyond merely designing solutions, they design holistic experiences.



WELL-CONNECTED
TO EVERYTHING,
INCLUDING
PEACE AND SERENITY.

CONNECTIVITY

Majiwada Junction: 2 kms | Eastern Express Highway: 2.5 kms Powai: 18 kms
Airoli, Navi Mumbai: 6.8 kms | Mulund Check-naka: 6.8 kms | BKC: 25 kms

LAKES

Upvan Lake: 6 kms | Talao Pali Lake: 3.4 kms

TEMPLE

Tri-Mandir: Adjacent to Verdant Vistas

SCHOOL

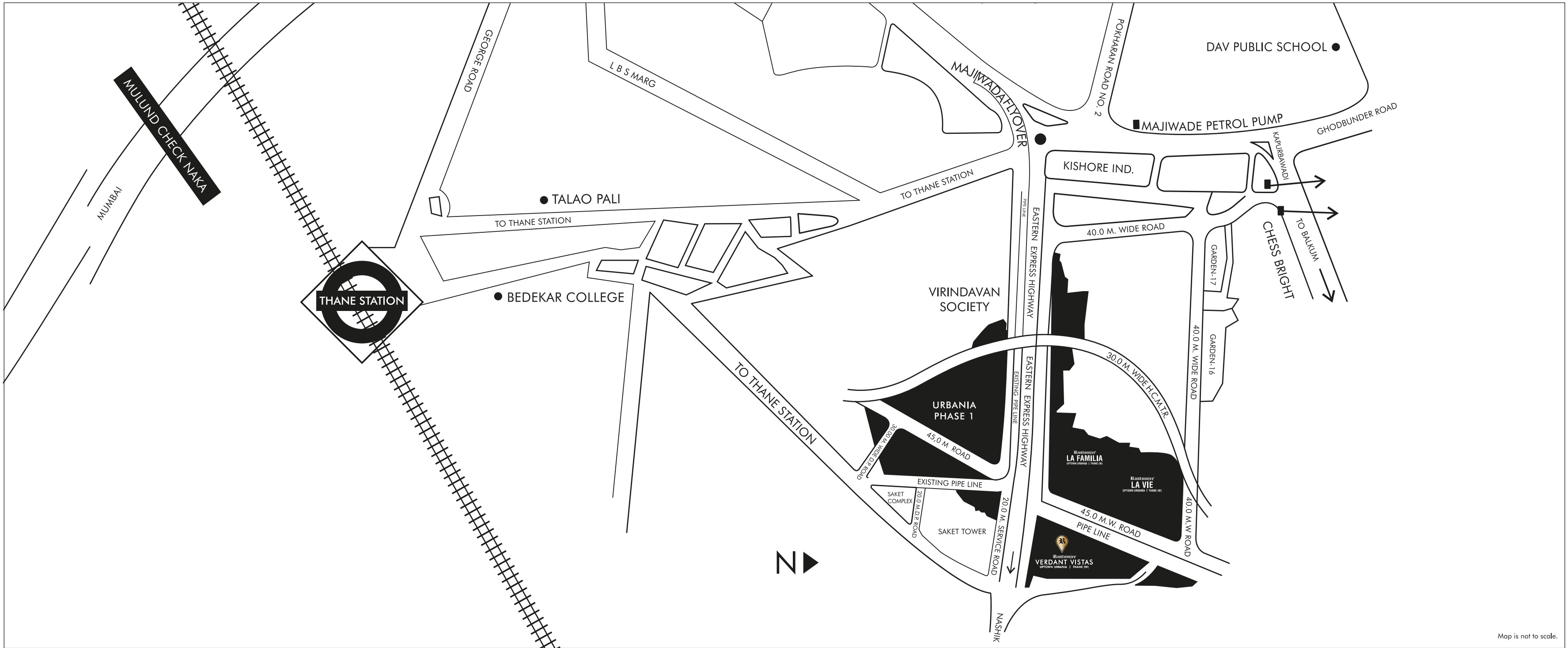
Rustomjee Cambridge International School Thane: Part of the 100+ acre township

MALLS

Viviana Mall: 2 km | Korum Mall: 3 km

HEALTHCARE

Jupiter Hospital: 2 km | Bethany Hospital: 3 km
Horizon Hospital: 4.7 km



Map is not to scale.

ADDING OUR
SIGNATURE MARK
OF LUXURY
TO THE
CITY'S SKYLINE.

28+
YEARS



25+
MN. SQ.FT.
DELIVERED

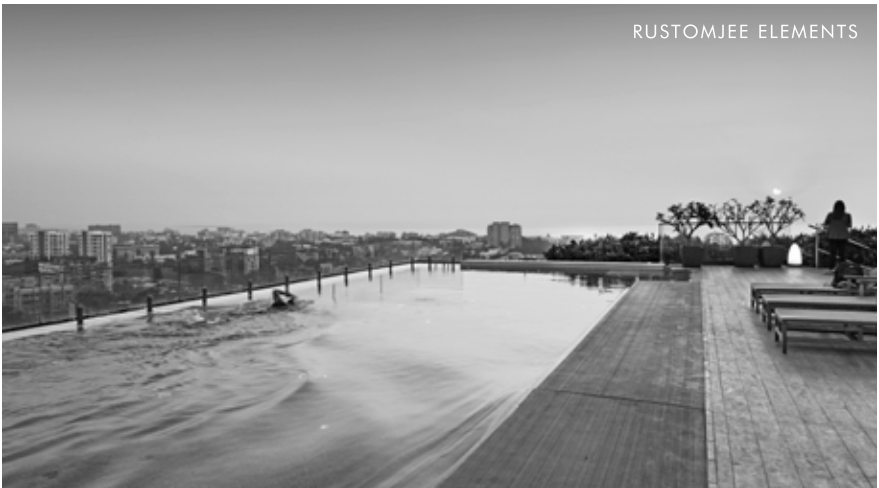


17000+
HAPPY
FAMILIES



42+
MN. SQ. FT.
IN THE
PIPELINE

SHOT AT A RUSTOMJEE PROPERTY



SHOT AT LOCATION / ARTIST'S IMPRESSION



IT'S THOUGHTFUL. IT'S **Rustomjee®**

IT'S THOUGHTFUL. IT'S **Rustomjee®**

CALL: 022 6111 6111 | WWW.RUSTOMJEE.COM

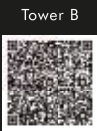
Site Address: Rustomjee Verdant Vistas, Off Mumbai Nashik Highway, Saket Balkum Road, Next to Tri-Mandir,
Majiwada Thane West 400601

Disclaimers: The content provided herein is for information purposes only and does not constitute an offer and/or acceptance and/or contract and/or agreement and/or transaction and/or any intention thereof and/or a disclosure under any statute of any nature whatsoever. The information provided in this advertisement, including all layouts, locations, plans, specifications, designs, elevations, features, amenities, facilities, services, product/equipment types, pictures, images, plans, drawings, dimensions, illustration, . . . specifications and brands mentioned are indicative of the kind of development proposed in this Project and its facility is subject to the approval of the respective concerned authorities or as required by the Promoter/Developer in the interest of continuing improvement, without prior notice or obligation. Minor variations (7/- 2%) in actual carpet areas may occur as a result of design/construction variances, finishing tolerances and column projections. The pictures/images and perspective views of the premises/building layout are an artist's impression of the development and/or actual stock/standard photography used for representational purposes only and are not a part of actual deliverables and are used to indicate a conceptual lifestyle. All transactions in respect of this Project shall be subject to the terms and conditions of the Agreement for Sale to be entered into between the Promoter/Developer and the Purchaser. Stamp duty and registration charges shall be as applicable. Terms and conditions shall apply in case sale is covered under any special banking scheme. Before making a decision to purchase, you are requested to independently, either directly or through your legal/financial consultants, thoroughly verify all details/documents pertaining to the respective project as available on: <https://maharera.mahaonline.gov.in/>. .



MahaRERA Registration No. Tower A - P51700077136.
Tower B - P51700077134. Listed on the website:
<http://maharera.mahaonline.gov.in/>

FOR RERA
DETAILS,
SCAN HERE.



Printed on recycled paper.
We make thoughtful
choices for the planet.